

AGA92.5

Product Description

The AGA92.5 manual kit allows adjustment of any PBA... valve manifold. A slotted plate and fastener are used to lock the position of the valve.

Components Supplied

Figure 1 shows the components supplied with the AGA92.5 manual kit:

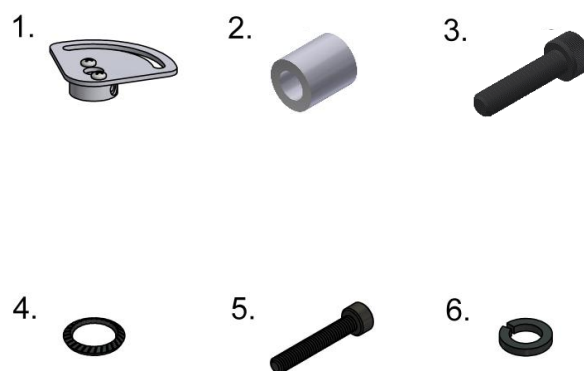


Figure 1: Pieces Supplied with the AGA92.5 Manual Kit

- | | |
|-------------------------------|-------------------------------|
| 1. Shaft adapter assembly | 4. M6 spring lock washer |
| 2. M6 spacer | 5. M4 x 25mm socket cap screw |
| 3. M6 x 25mm socket cap screw | 6. M4 split lock washer |

Recommended Installation Tools

The following tools are recommended for installing the AGA92.5 manual kit:

- 3mm hex key
 - 5mm hex key
 - ½" wrench or adjustable wrench
-

Installation Procedure

1. If adding the AGA92.5 to an existing assembly, first the bracket/coupling assembly must be removed. Start with removing the existing bracket by unfastening the two M6x14mm screws shown in Figure 2. A 5mm hex key is required to remove them.

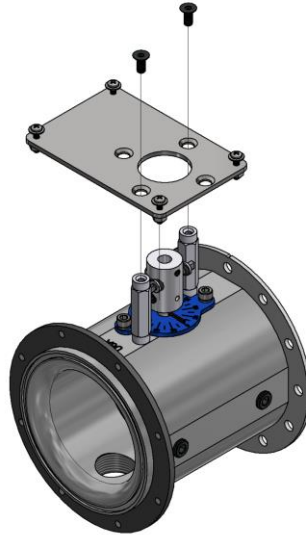


Figure 2: Bracket Removal

2. Remove the standoffs using a $\frac{1}{2}$ " wrench or adjustable wrench.



Figure 3: Standoff Removal

Installation Procedure (continued)

3. Remove the coupling fastener and washer with a 3mm hex key. Then slide the coupling off the shaft.

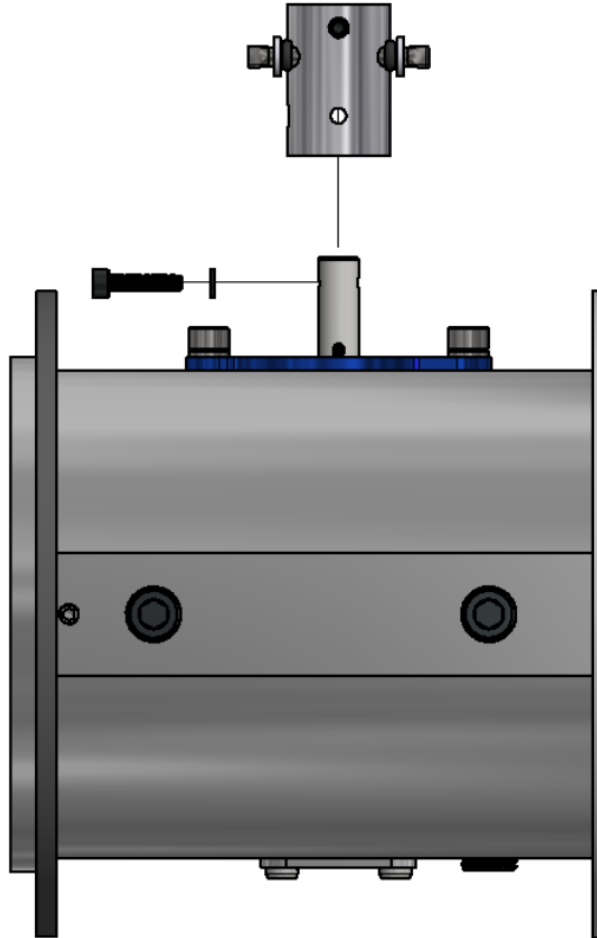


Figure 4: Coupling Removal

Installation Procedure (continued)

4. Slide the shaft adapter assembly over the PBA... valve shaft as shown in Figure 5, lining up the hole in the shaft adapter assembly with the threaded hole in the valve shaft. Using a 3mm hex key, the M4 split lock washer, and the M4 x 25mm socket cap screw, fasten the shaft adapter assembly to the PBA... valve manifold.

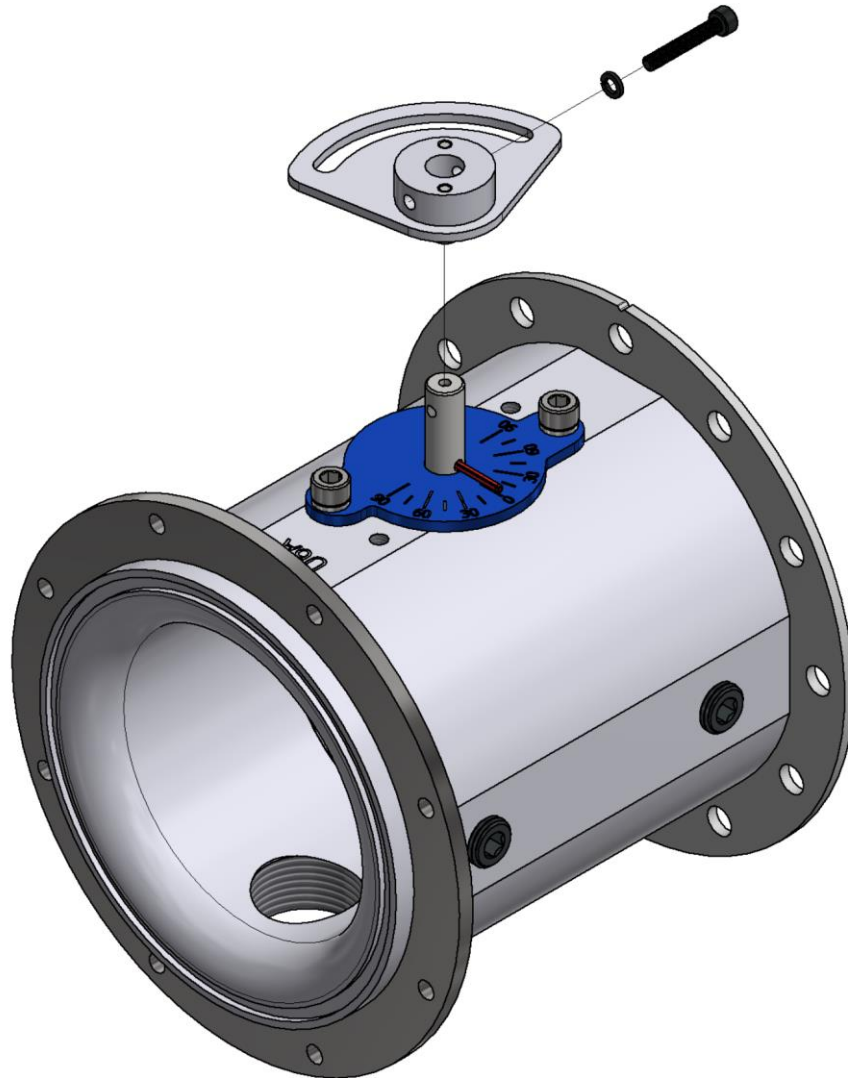


Figure 5: Shaft Adapter Assembly Installation

Installation Procedure (continued)

5. Slide the M6 spacer between the PBA body and the slotted plate of the shaft adapter assembly so that the hole in the spacer lines up with the threaded hole in the PBA body as shown in Figure 6 below. Using a 5mm hex key, the M6 spring lock washer, and the M6 x 25mm socket cap screw, fasten the slotted plate against the M6 spacer in any desired position from 0-90°. To change the valve position, simply loosen the M6 socket cap screw, adjust the valve position by hand, and fasten the M6 socket cap screw against the M6 spacer.

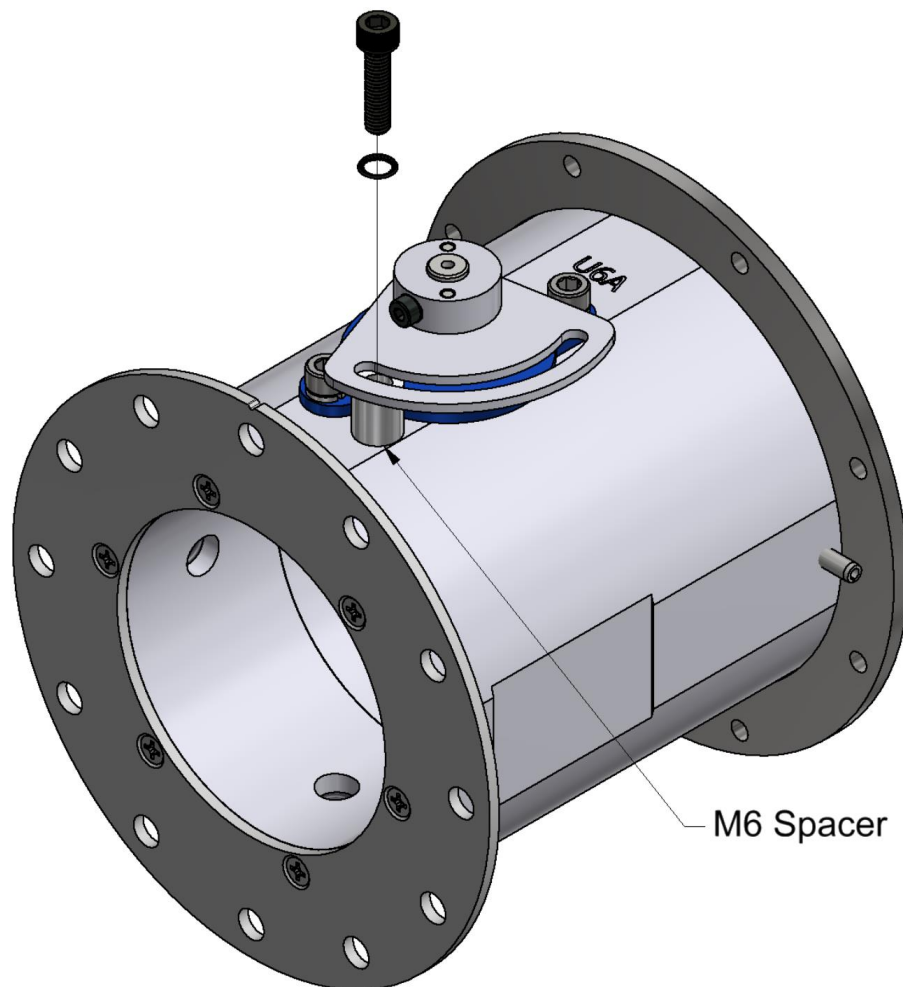


Figure 6: Completed Installation of AGA92.5 Manual Kit

Information in this publication is based on current specifications. The company reserves the right to make changes in specifications and models as design improvements are introduced. Product or company names mentioned herein may be the trademarks of their respective owners. © 2022 SCC Inc.